

# Community Meeting

COLLABORATE WITH SUNDON PARK COMMUNITY

DATE:- Januray 26th 2022

TIMES:- 2:30pm & 6:30pm

VENUE:- Leagrave Park Pavilion (Sundon Park)

Please book for meeting slot at  
<https://artundefined.com/sp-community-piece-by-piece-project/>





# Piece By Piece Project

*At Leagrave Park Pavilion*



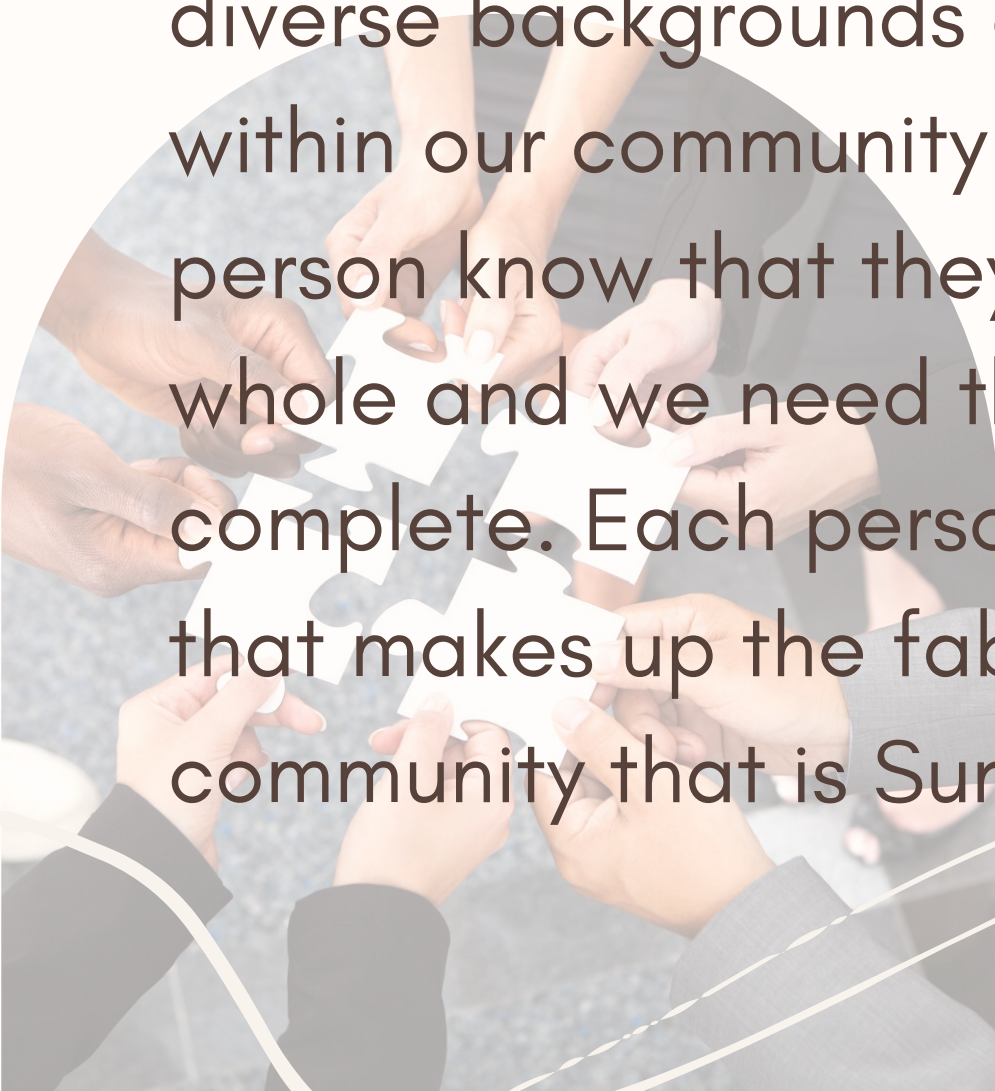
# Piece By Piece

This is a project that has been decades in the making. Hence its name, Piece By Piece.

We will be creating a Community Hub for Sundon Park, piece by piece, over the coming decade.

We are embracing all the local community's individual skills, talents, and abilities; each person is a jigsaw piece in our society's landscape.

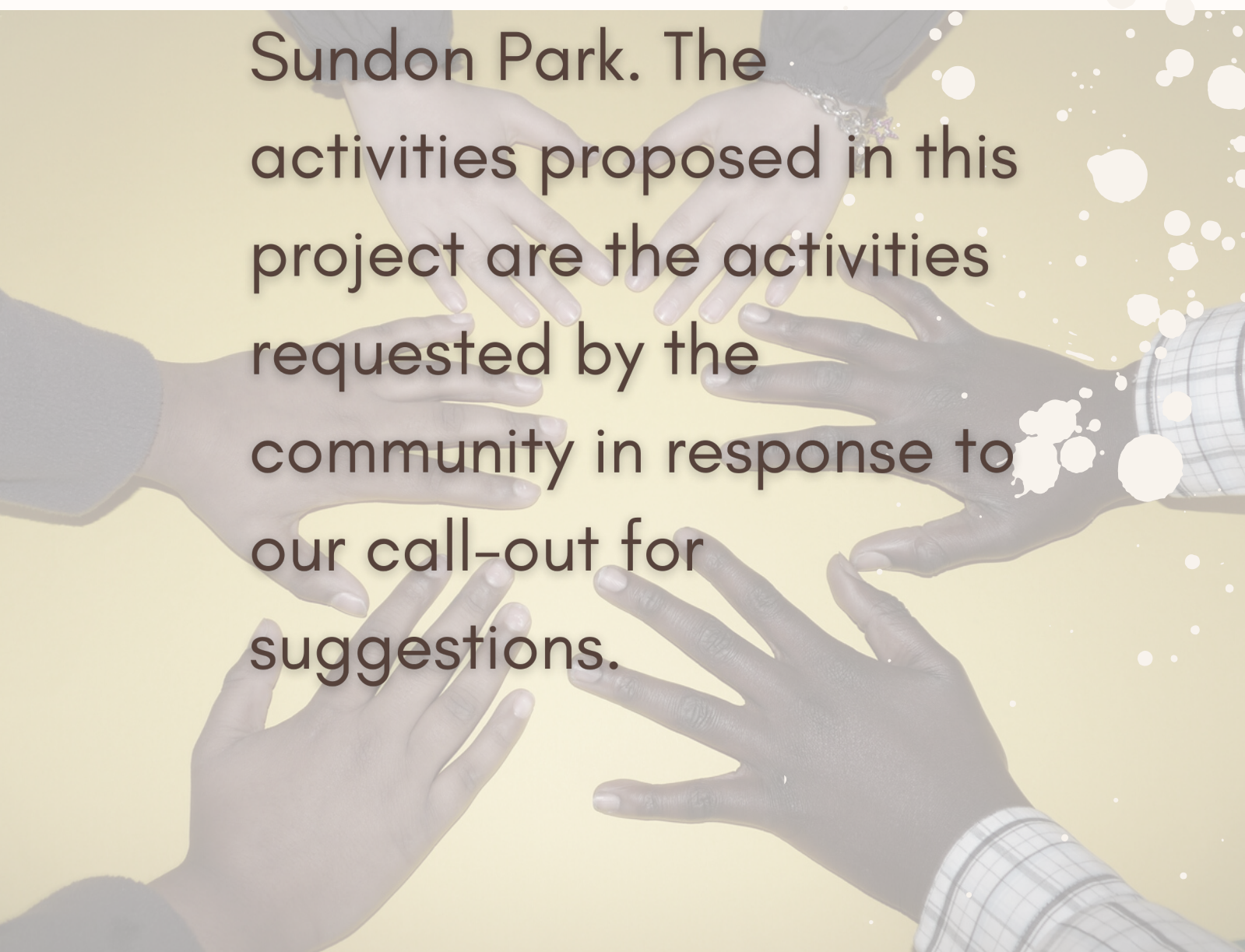
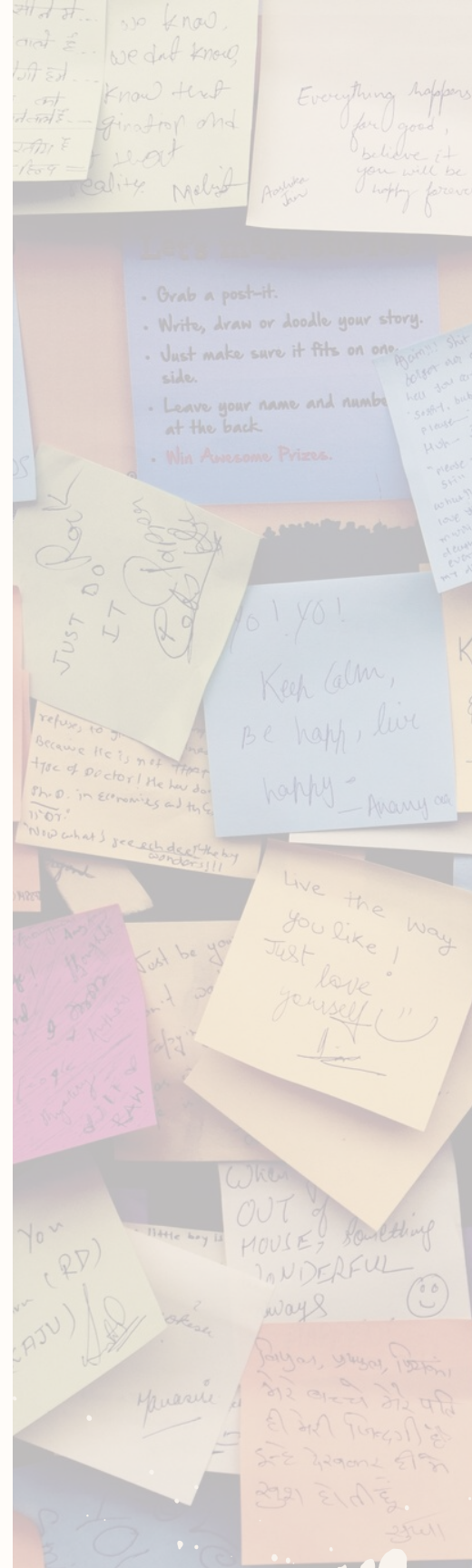
We are taking inspiration from all the diverse backgrounds and cultures within our community and letting each person know that they are a part of a whole and we need them to be complete. Each person is a tiny thread that makes up the fabric of the community that is Sundon Park.





# Features & Benefits

In the early 2010's we approached LBC to take over the former Sundon Park Library to turn into a community hub. At this time, we conducted community surveys, feedback forms and community discussions. We also had a door-to-door leaflet drop of surveys to ensure we reached each resident in Sundon Park. The activities proposed in this project are the activities requested by the community in response to our call-out for suggestions.



# Sample Features

## THE PAVILION – WEEKDAY COMMUNITY HUB

- A meeting place for all ages
- Events & Activities
- “Luton’s Lost Legacies”
- A theatre production in the Temporary Theatre Garden.
- Children’s Activities
- Environment and conservation activities
- Food and Wellbeing activities
- Art Medicine
- Variety of Art Therapy and Wellness workshops
- A monthly Learning Resource Centre
- Community-led Activities, events and projects
- Monthly Book Club with book shop
- Sports Services (As per agreement)
- Signposting to relevant services, i.e., homelessness, debt & legal advice, substance abuse, parental and marriage guidance.
- Advisory Service days, i.e., lectures, talks, workshops from relevant professionals



# Potential Benefits

## THE PAVILION - WEEKDAY COMMUNITY HUB

- Community Hub
- Improvement in health and well being
- Increased self-confidence, productivity
- A greater sense of vitality and peace of mind.
- Improved education and skill attainment
- Improved physical health from Dance and Art therapy classes
- Access to a greater range of services.
- Activities and entertainment
- Access to learning resources
- Greater sense of community
- A space for individuals to get together and socialise
- Improving the community spirit as well as the self-worth, value and self-esteem of all those participating in services and activities
- Enriches people's lives.





# The Piece by Piece Project

A NINE RED PRESENTS... CIC  
PROJECT RAN IN  
COLLABORATION WITH THE  
SUNDON PARK COMMUNITY



# About NRP

## **QUEEN'S AWARD WINNING COMMUNITY INTEREST COMPANY**

Nine Red began with one simple purpose, to respond to the need of our local community. We have run many community projects over the years, for which we have received many awards and accreditations. For example, the AVS Project began in 2010 to respond to the needs of abuse victims in Sundon Park. Our carnival troop was created by AVS service users who wanted to raise awareness of violence against women and girls. We used carnivals, festivals and stage performances to bring public attention to the cause. In 2007, we began the Diverse Britain project, a series of mobile cultural art exhibitions exploring Luton's diverse heritages. We ran exhibitions and workshops in both Lealands and Lea Manor. Our theatre projects and productions were first created in the Sundon Park Community Centre Trust Building in 2005. We wanted to bring theatrical and cultural art production out of the town centre to this provisional ward. From those beginnings, we went on to perform in the Love Luton 2012 torch ceremony, and a couple of us performed at the London 2012 Opening and Closing Ceremonies. Our digital arts youth mentoring programme began with youth from Sundon Park and Marsh Farm. One of our creations, a 1.5m x 2m acrylic photo mosaic of Lea Manor High School, was displayed in the Exclusion Zone from December 2011.